

1.13.2 Hillebrandt Bayou

Hillebrandt Bayou begins near Beaumont in northern Jefferson County and flows southeasterly for 18 miles where it empties into Taylor Bayou, which then flows into Sabine Lake and ultimately into the Gulf of Mexico. Hillebrandt Bayou is intermittent in its upper reaches, which were once known as Double Point Bayou (Handbook of Texas Online 2004), and is tidally influenced about 10 miles upstream of its confluence with Taylor Bayou (TCEQ 2004). The bayou has been dredged and channelized in its upper reaches and the lower reaches are characterized by numerous oxbows and backsloughs. Water from the lower portion of the bayou is used for irrigating rice crops in central Jefferson County. Water quality and the structure of the macroinvertebrate community of Hillebrandt Bayou have been impacted by surface runoff and sewage treatment plant effluent from the City of Beaumont (Duplechin 1975, Ray 1999). Fish collections from Hillebrandt Bayou using gill nets and seines yielded 25 species (Linam and Kleinsasser 1987a) (Appendix C). The ecologically significant stream segment is from the confluence with Taylor Bayou upstream to its headwaters near Beaumont in Jefferson County.

- **Riparian conservation area-** fringed by the 24,366-acre J.D. Murphree Wildlife Management Area.

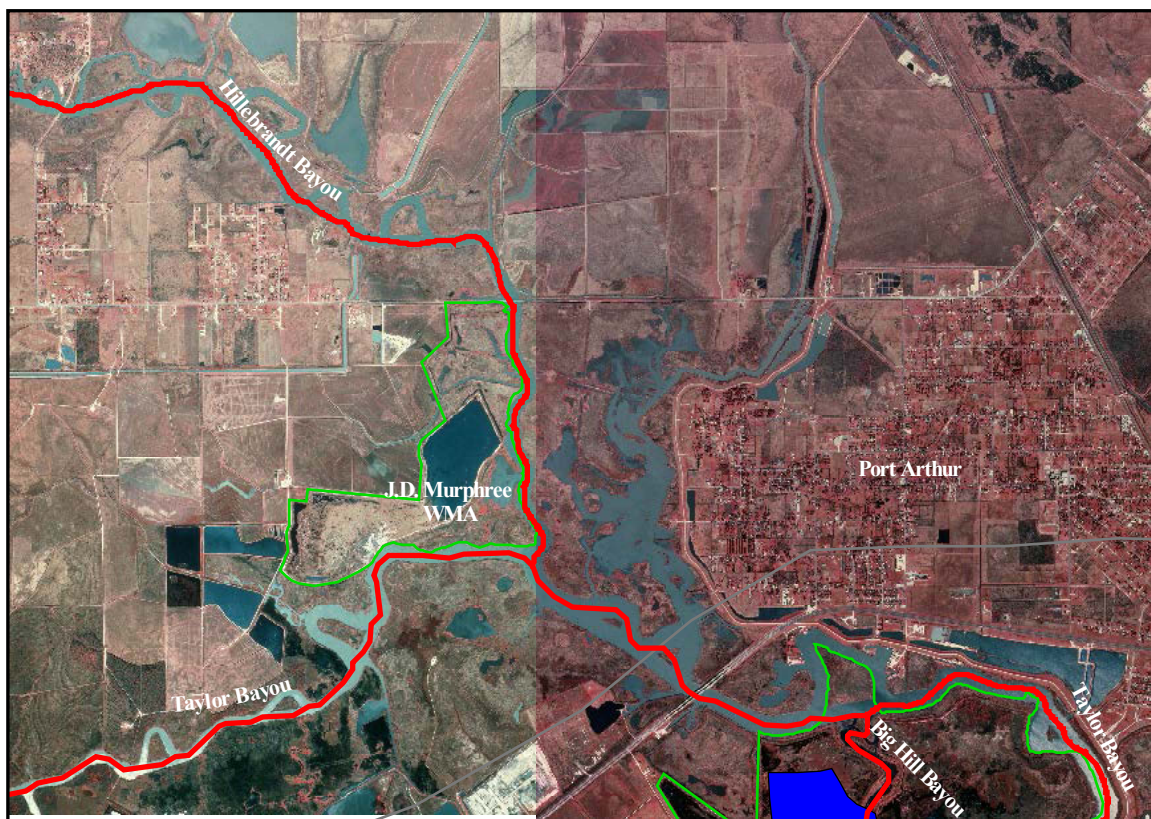


Figure 56. Hillebrandt Bayou. Source: Port Acres DOQ, 1995.