

### 1.9.6 Middle Sabine River

The middle section of the Sabine River is undeveloped and relatively remote with numerous long isolated stretches. Slow moving current, white sand bars, and cypress trees lined with Spanish moss distinguish much of the Sabine River downstream of Toledo Bend Reservoir. The surrounding cypress swamps combined with the numerous creeks and bayous that join the Sabine River in this section provide habitat for a wide variety of wildlife, including white-tailed deer, feral hog, dove, woodcock, squirrel, and rabbits. Belisle and Josselet (1974) referred to this section of the Sabine River as “one of the more scenic, quality waterways in the State.” The river generally maintains abundant flow due to heavy rainfall and numerous tributaries and springs, with long isolated stretches. This section of the river is popular for float trips and the fine white sand bars that dot the banks are often utilized for camping and day use. The ecologically significant stream segment is from the IH-10 crossing in Orange County upstream to Toledo Bend Dam in Newton County (TCEQ classified stream segment 0503 and part of 0501).

- **Biological function-** extensive palustrine and riverine freshwater wetlands display significant overall habitat value considering the quantity and quality (USFWS 2005). Texas Natural Rivers System nominee for outstandingly remarkable fish and wildlife values (NPS 1995).
- **High water quality/exceptional aquatic life/high aesthetic value-** Texas Natural Rivers System nominee for exceptional aesthetic value (NPS 1995).



Figure 13. Middle Sabine River north of SH12 in Newton County (8/14/01).

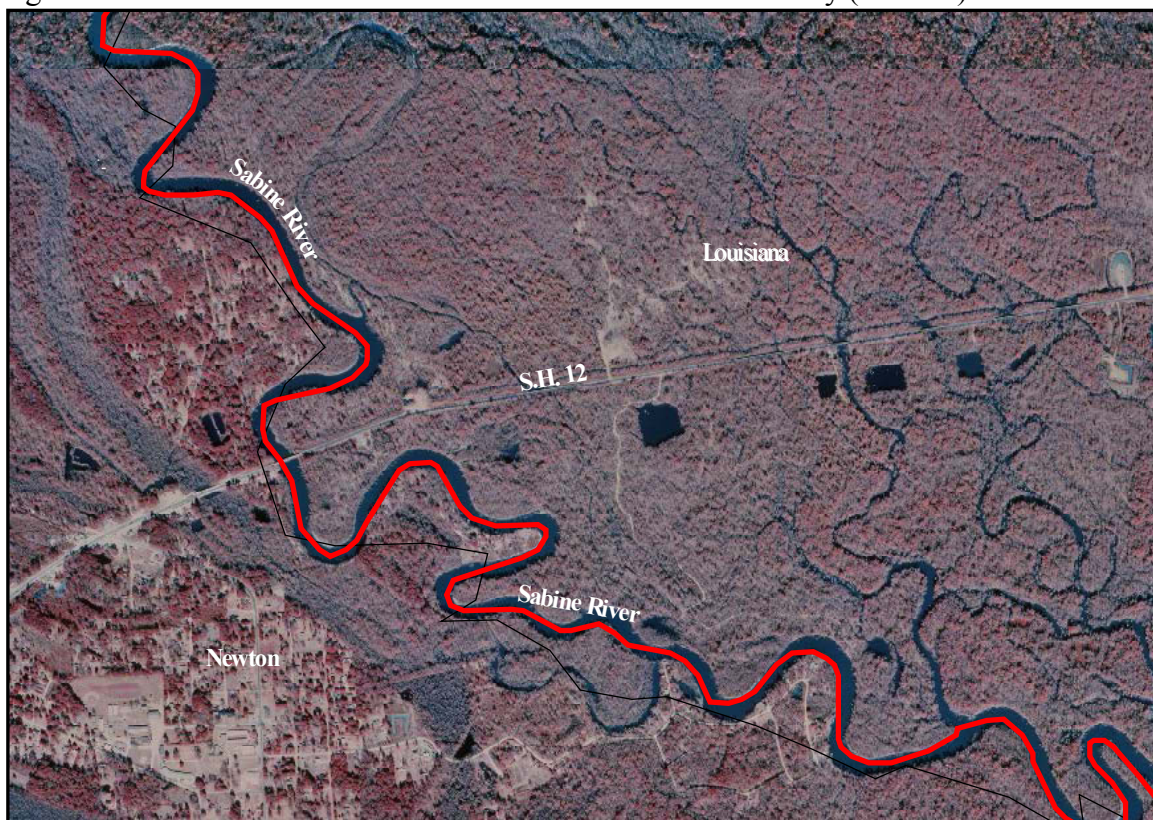


Figure 14. Sabine River at SH 12 in Newton County. Source: Starks DOQ, 1996.