

### 1.13.3 Salt Bayou

Salt Bayou rises in western Jefferson County and flows east through numerous small impoundments before discharging into the Gulf Intracoastal Waterway (GIWW). The bayou flows through the McFaddin National Wildlife Refuge, which protects one of the largest remaining freshwater marshes in Texas as well as thousands of acres of intermediate to brackish marsh (USFWS 2004a). The refuge supplies important feeding and resting areas for migrating and wintering populations of waterfowl. The ecologically significant stream segment is from the confluence with the Gulf Intracoastal Waterway upstream to its headwaters in Jefferson County.

- **Riparian conservation area-** fringed by the 42,995-acre McFaddin National Wildlife Refuge, the 4,141-acre Sea Rim State Park, and the 24,366-acre J.D. Murphree Wildlife Management Area.

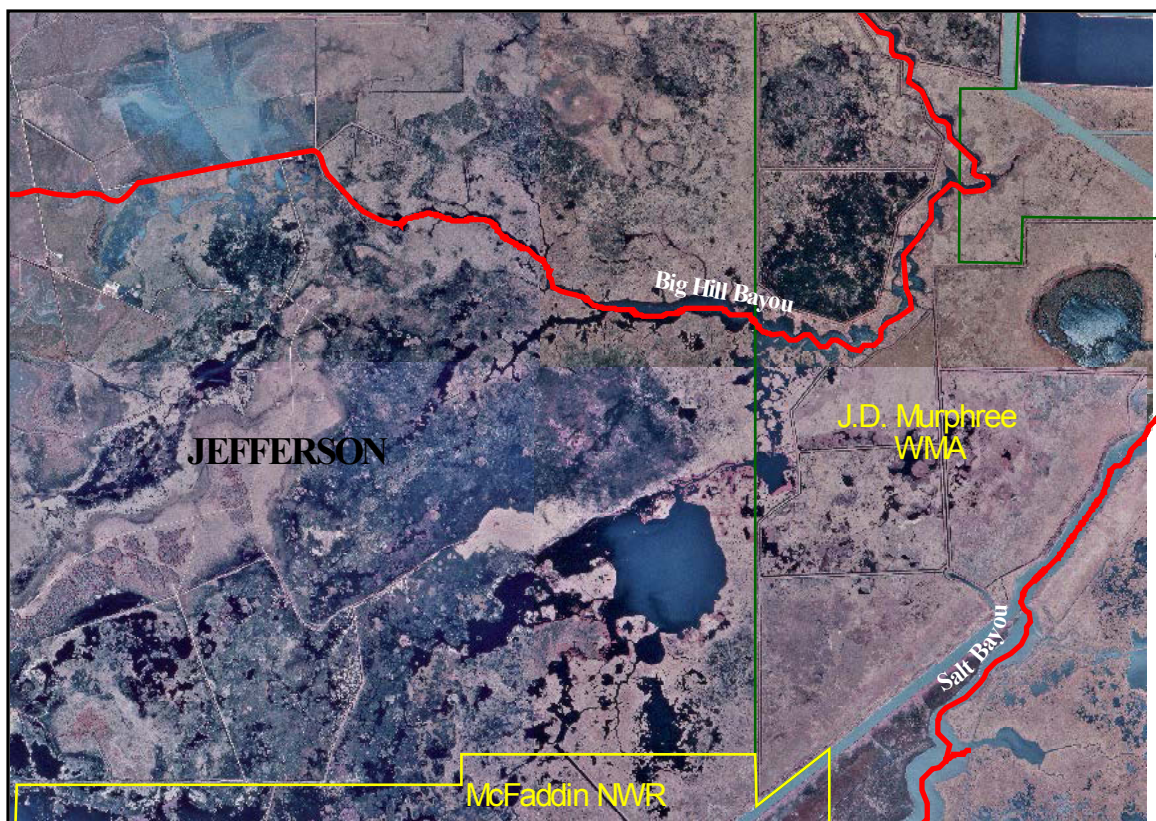


Figure 57. Salt Bayou at J.D. Murphree WMA, Jefferson County. Source: Big Hill Bayou DOQ, 1996.