

### 1.11.11 Sandy Creek

Sandy Creek is a first order stream that begins in the northern portion of the Davy Crockett National Forest and flows approximately nine miles before joining Camp Creek in Houston County. Flow in Sandy Creek is sustained by a series of springs located near its headwaters (Kelly 1995). The substrate is dominated by sand and loam and the banks are lined with a moderate canopy of vegetation (Feaster 1998). The freshwater mussel little spectaclecase (*Villosa lienosa*) was collected from Sandy Creek (Feaster 1998). This species is reportedly abundant in headwater creeks in Louisiana (Vidrine 1993), but appears to be declining in abundance in Texas (Howells 1996). The ecologically significant stream segment is from the confluence with Camp Creek in Houston County upstream to its headwaters east of FM 227.

- **Riparian conservation area-** fringed by the 162,102-acre Davy Crockett National Forest.
- **Threatened or endangered species/unique communities-** significant due to presence of the creek chubsucker (*Erimyzon oblongus*) (SOC/St.T) (Kelly 1995).

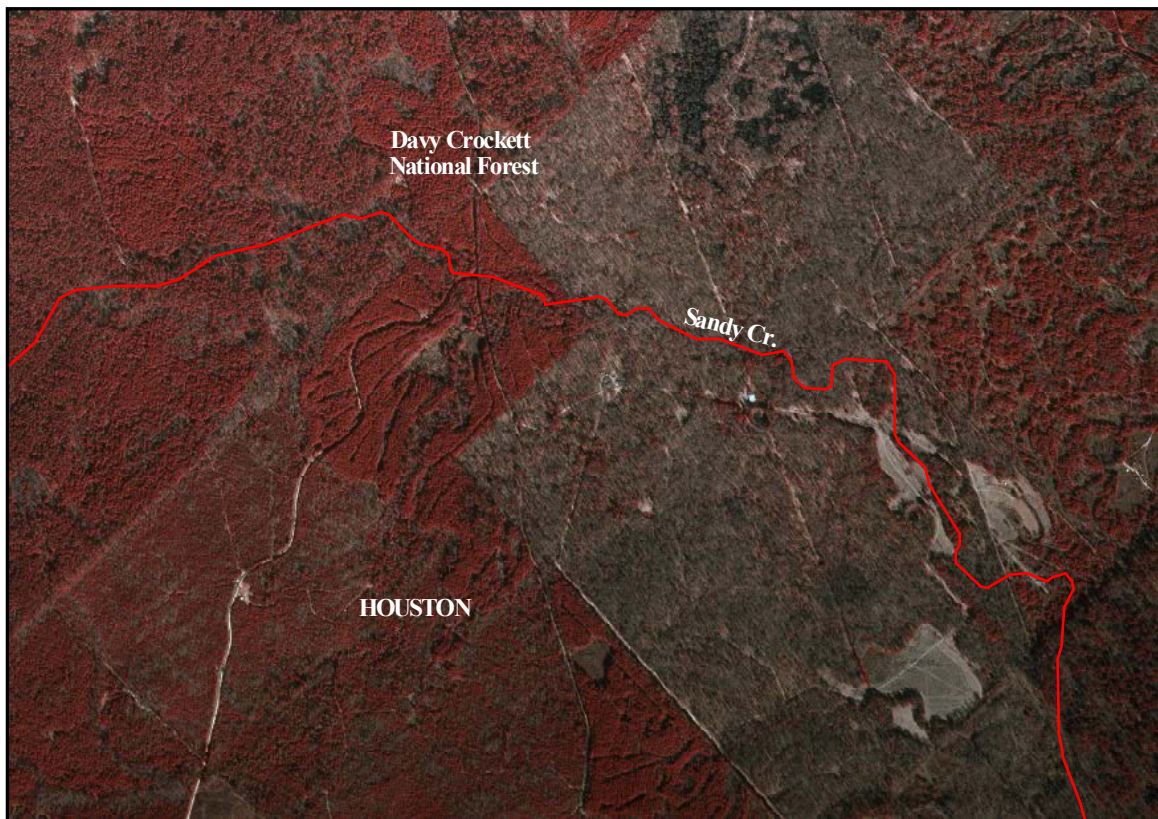


Figure 45. Sandy Creek within Davy Crockett National Forest, Houston County. Source: Weches DOQ, 1995.