

1.12.7 Sandy Creek (Shelby County)

From the confluence with Attoyac Bayou in Shelby County upstream to Pinkston Dam in Shelby County.

- **Threatened or endangered species/unique communities** - only known remaining population of endemic triangle pigtoe freshwater mussel (*Fusconaia lananensis*) (Howells, 1996).

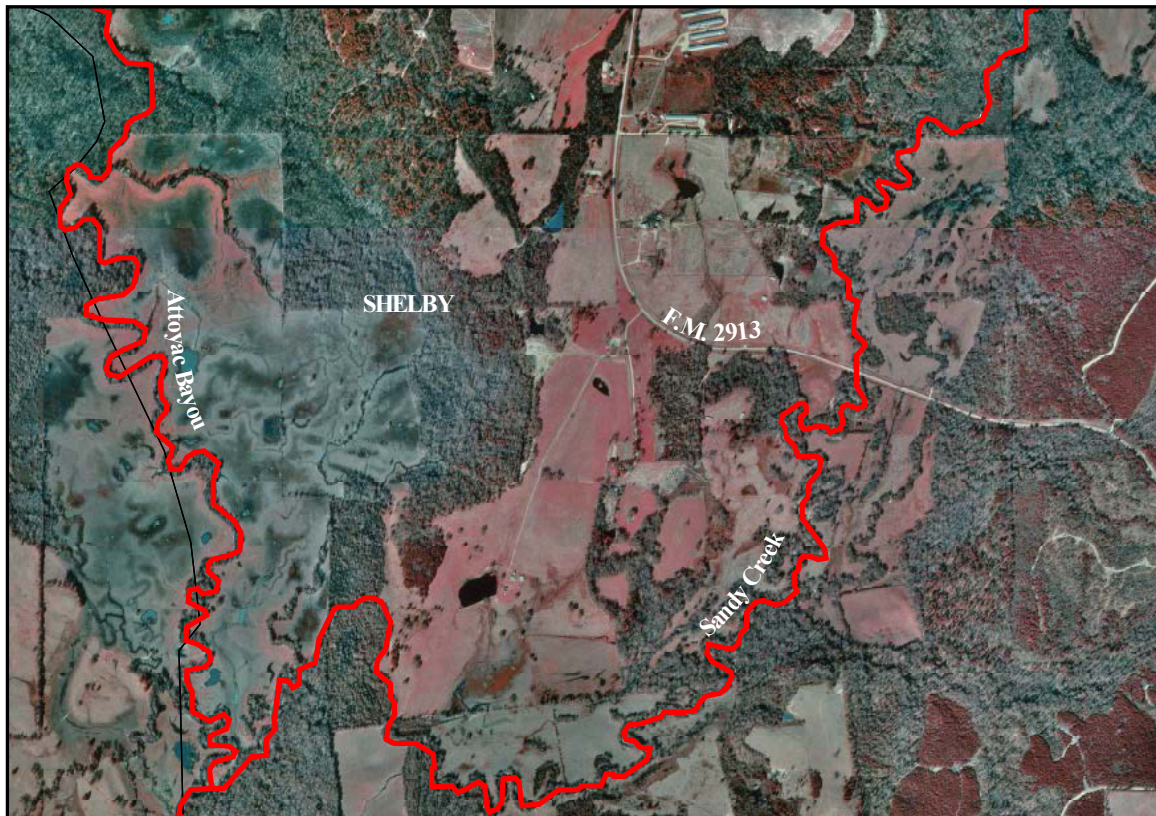


Figure 53. Sandy Creek at FM 2913, Shelby County. Source: Martinsville DOQ, 1995.



Figure 54. Sandy Creek north of FM 2913 in Shelby County (8/13/01).