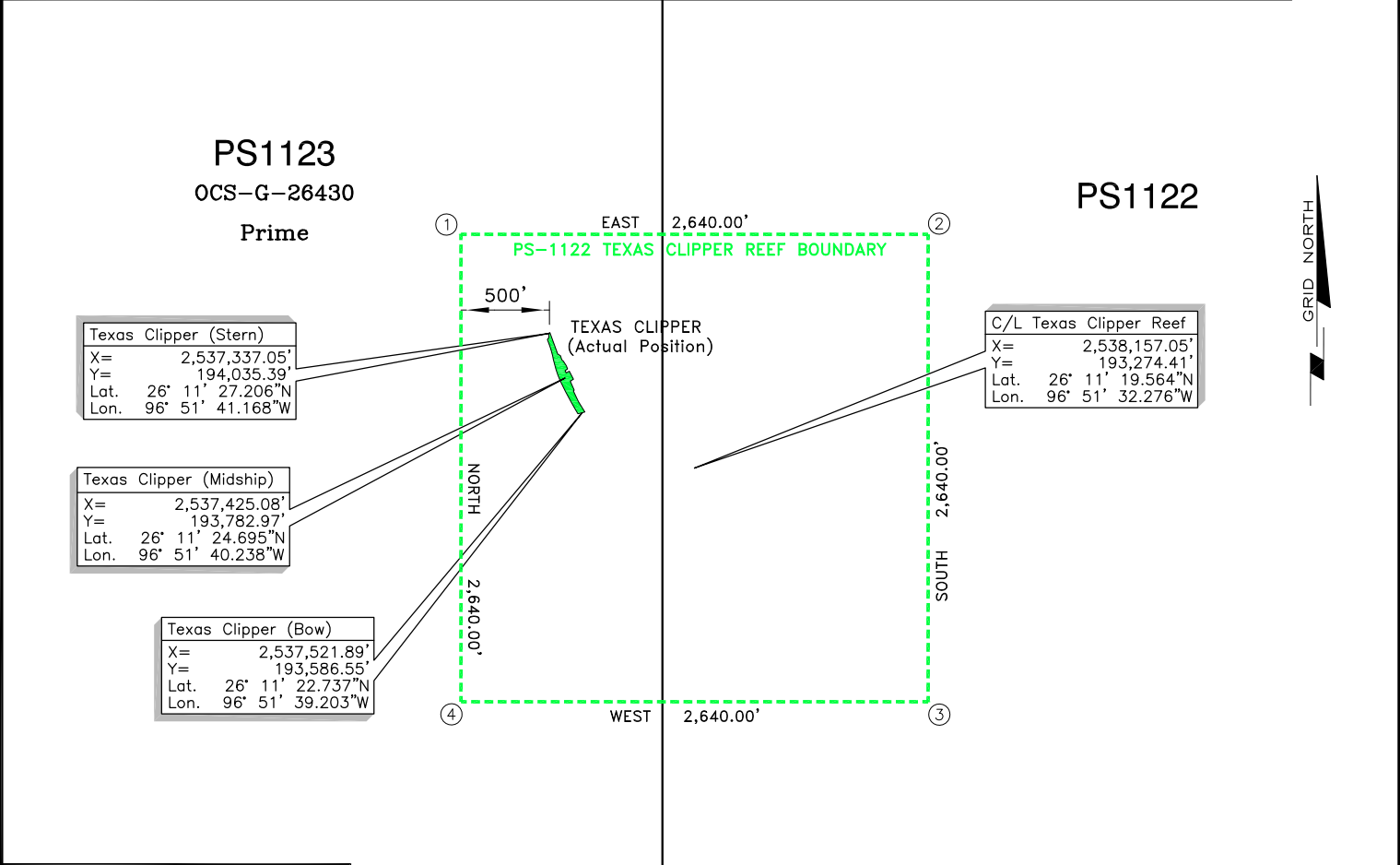


# ARTIFICIAL REEF BOUNDARY

NAD27-TX SOUTH					NAD83-TX SOUTH			
LOCATION	X COORDINATE	Y COORDINATE	LATITUDE	LONGITUDE	X COORDINATE	Y COORDINATE	LATITUDE	LONGITUDE
1	2,536,837.05'	194,594.41'	26° 11' 32.807"N	96° 51' 46.577"W	1,520,997.23'	16,598,895.98'	26° 11' 34.073"N	96° 51' 47.438"W
2	2,539,477.05'	194,594.41'	26° 11' 32.467"N	96° 51' 17.598"W	1,523,637.26'	16,598,895.95'	26° 11' 33.733"N	96° 51' 18.458"W
3	2,539,477.05'	191,954.41'	26° 11' 06.321"N	96° 51' 17.976"W	1,523,637.28'	16,596,255.89'	26° 11' 07.587"N	96° 51' 18.836"W
4	2,536,837.05'	191,954.41'	26° 11' 06.661"N	96° 51' 46.953"W	1,520,997.25'	16,596,255.92'	26° 11' 07.928"N	96° 51' 47.814"W

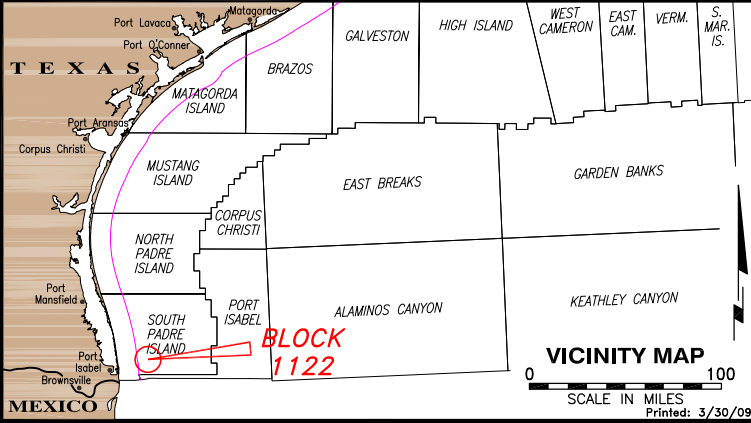
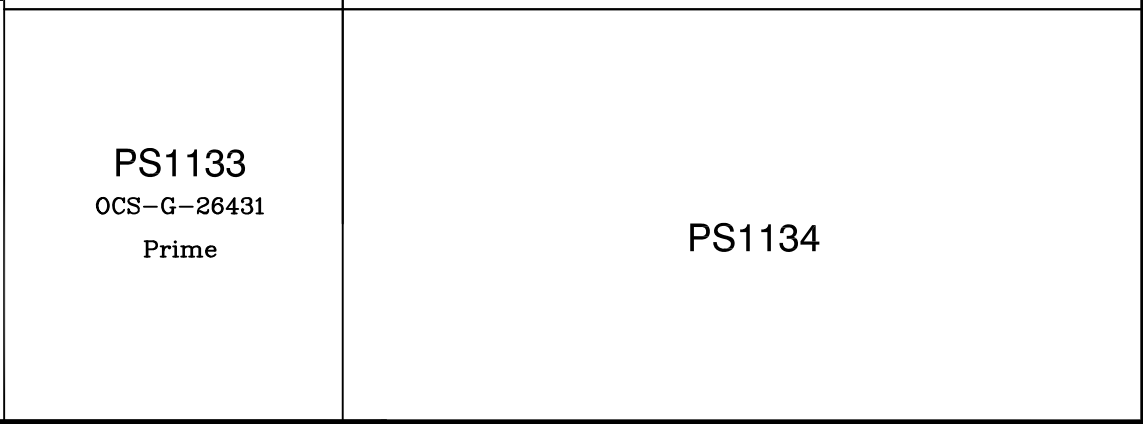


I HEREBY CERTIFY THAT THE ABOVE FINAL WELL SURFACE LOCATION IS CORRECT.

DIGITAL COPY

ORIGINAL PLAT SIGNED 3/30/09

REG. PROFESSIONAL LAND SURVEYOR NO. 4903  
STATE OF LOUISIANA



**TEXAS PARKS AND WILDLIFE**

**PS-1122 TEXAS CLIPPER  
FINAL REEF POSITION**

BLOCK PS-1123  
SOUTH PADRE ISLAND AREA  
GULF OF MEXICO

**FUGRO CHANCE INC.**

200 Dulles Dr. Lafayette, Louisiana 70506-3001 (337) 237-1300

GEODETTIC DATUM: NAD27 PROJECTION: TEXAS SOUTH GRID UNITS: US SURVEY FEET	SCALE IN FEET
Job No.: 07-03147    Date: 3/30/09    Drwn: SJL	Chart: Of:
Dwgfile: H:\2007\0703147\CAD\Marine\0703147A	
1	2