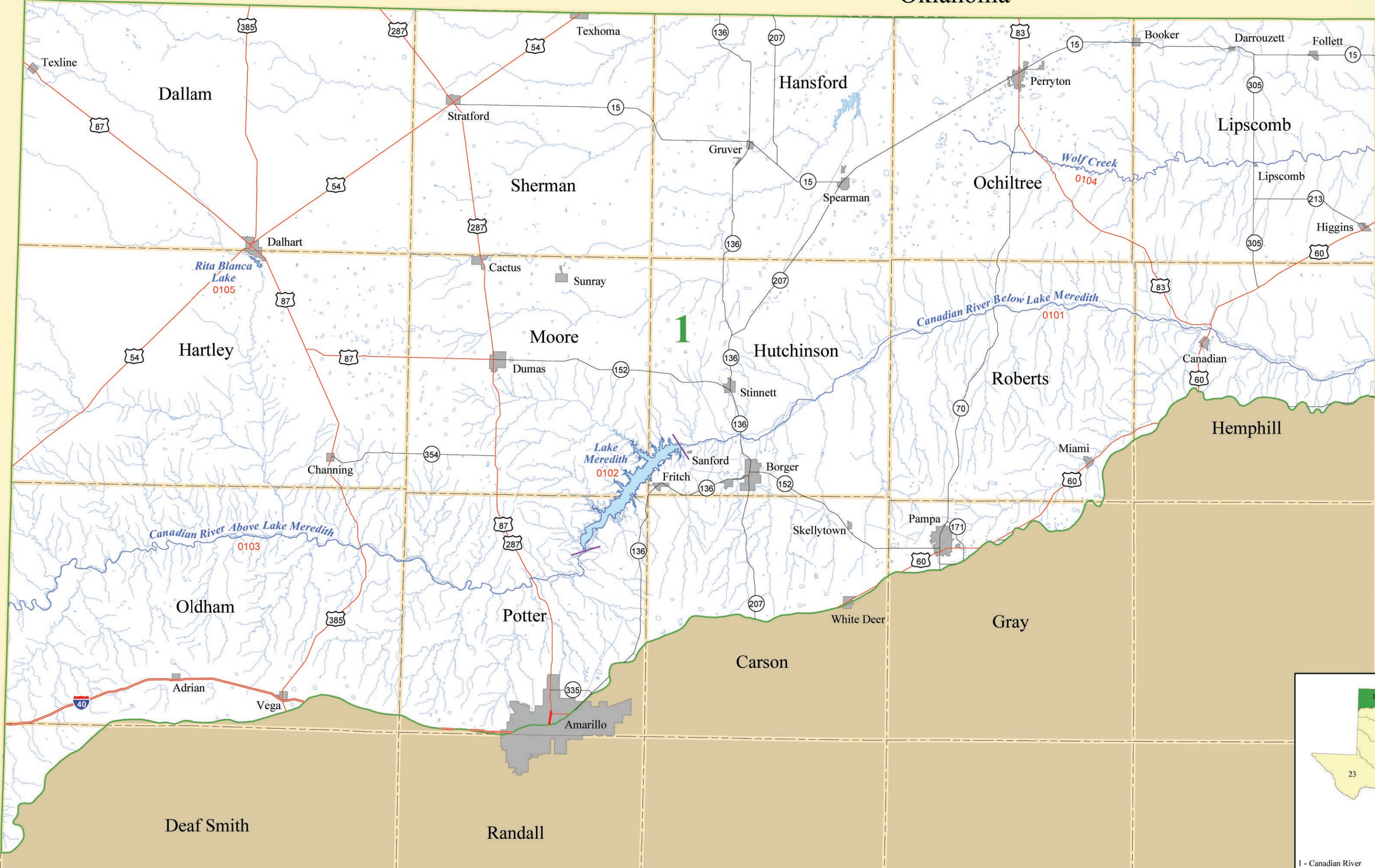


New Mexico



Legend

- Interstate Highway
- U.S. Highway
- State Highway
- 0310** Classified Segment Number
- Classified Stream Segment
- Minor Stream
- Reservoir, Bay, Estuary
- Segment Boundary
- Basin Boundary
- City Boundary
- County Boundary

Note: All features except county lines and some city boundaries are clipped to the extent of the watershed.

Source: The county boundaries and major streams were acquired from the U.S. Census Bureau and are part of the 1992 TIGER/Line dataset (1:100,000). The minor streams are based on the Environmental Protection Agency's River Reach File Version 3.0 Alpha Release (RF3-Alpha), completed in 1998 at a scale of 1:100,000. The river basins are derived from the 1974 Hydrologic Unit Map of Texas (1:500,000) and were digitized by the U.S. Geological Survey in 1990. The classified stream segment names, numbers, and boundaries are defined in Title 30, Chapter 307 of the Texas Administrative Code (TAC) and were revised by the Texas Commission on Environmental Quality in 2000. The highway data are based on enhanced U.S. Census Bureau 1990 TIGER/Line data (1:100,000) published in 1992 by Geographic Data Technology (GDT), Inc. The cities were derived from U.S. Census Bureau 1998 TIGER/Line data (1:100,000).

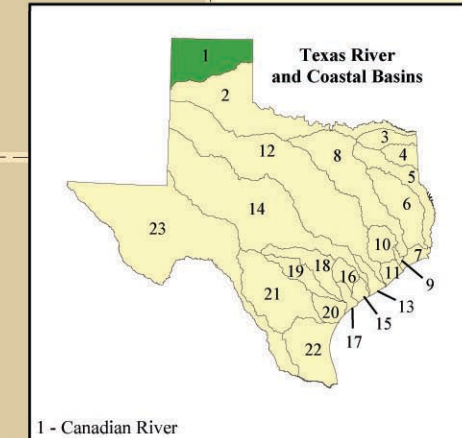


Scale 1:685,000

Projection: Texas Statewide Mapping System (TSMS)



This map was generated by the Information Resources Division of the Texas Commission on Environmental Quality. No claims are made to the accuracy or completeness of the data or to its suitability for a particular use. For more information concerning this map, contact the Information Resources Division at (512) 239-0800.



1 - Canadian River